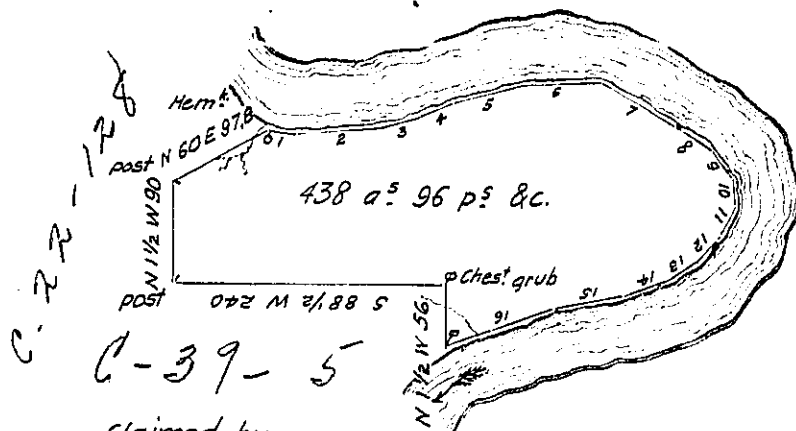


Courses & Distances down River, from Helm^k

- N^o 1 S 84 E 24
 - " 2 N 84 E 76
 - " 3 N 75 E 34
 - " 4 N 68 E 32
 - " 5 N 75 E 64
 - " 6 N 85 E 68
 - " 7 S 62 E 74
 - " 8 S 58 E 40
 - " 9 S 36 E 28
 - " 10 S 12 E 23
 - " 11 S 22 W 29
 - " 12 S 42 W 32
 - " 13 S 52 W 32
 - " 14 S 69 W 42
 - " 15 S 79 W 60
 - " 16 S 68 W 105
- to Beech

Heirs of Wm Stein Decd



Claimed by John Witherup

Draft of a tract of land situate in Sandy Creek Township Venango county, west of & adjoining the Allegheny River about two miles above the mouth of Scrubgrass Creek.

Surveyed 15th May 1839, in pursuance of a warrant granted to Moses Helm dated 21st April 1794.

Richd Irwin D.S.

Jacob Sallady Esquire

Surveyor General of Pa.

IN TESTIMONY that the above is a copy of the original remaining on file in the Department of Internal Affairs of Pennsylvania, made conformably to an Act of Assembly approved the 16th day of February, 1833, I have hereunto set my Hand and caused the Seal of said Department to be affixed at Harrisburg, this eighth day of June 1905

Geo D. Davis
Secretary of Internal Affairs.